

Installing ProfitStars Scan Service

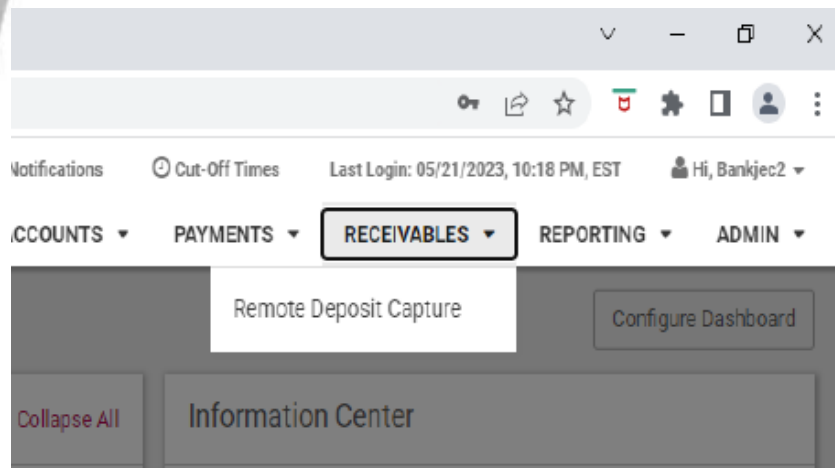
Treasury Management

If you are accessing Remote Deposit Complete for the first time, you will need to install the ProfitStars Scan Service, an application used to manage your check scanner. ProfitStars Scan Service must be installed before you can begin making deposits.

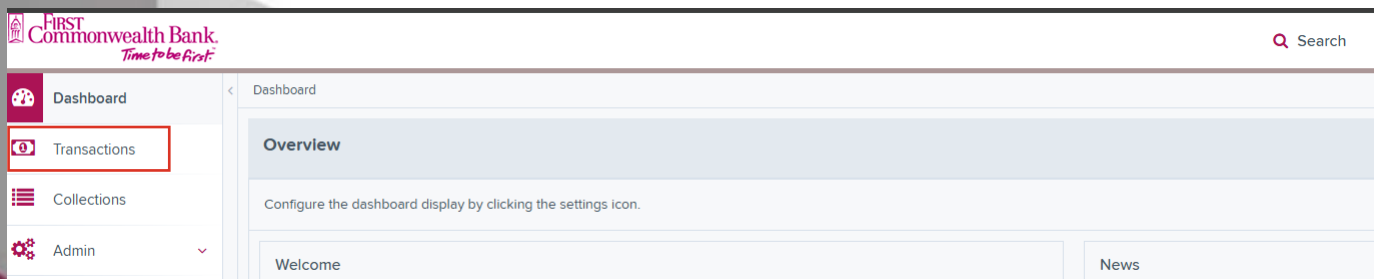
We recommend that you maximize your browser window to best reflect the screenshots included in this document.

NOTE: Before starting the installation, ensure the scanner's USB cable is *disconnected* from the computer and exit all other applications.

1. Login to *Treasury Management Online Banking* and click on **Receivables** and then **Remote Deposit Capture**.



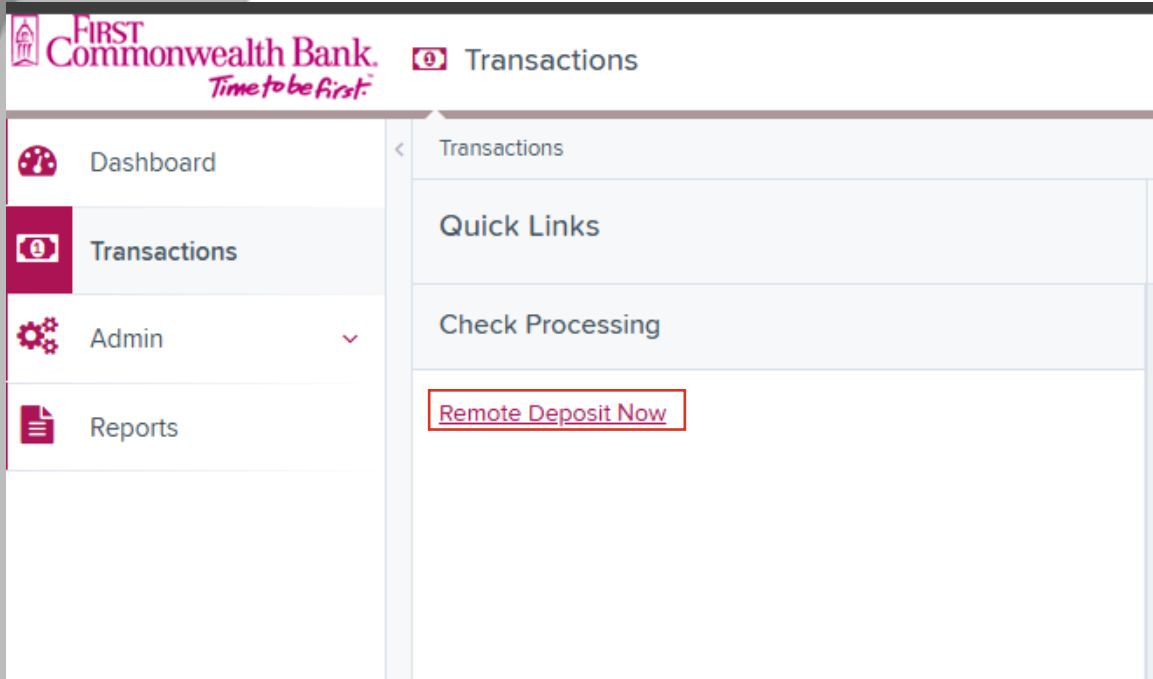
2. Select **Transactions** from the main sidebar menu.



Installing ProfitStars Scan Service

Treasury Management

- Under *Check Processing*, choose **Remote Deposit Now**.



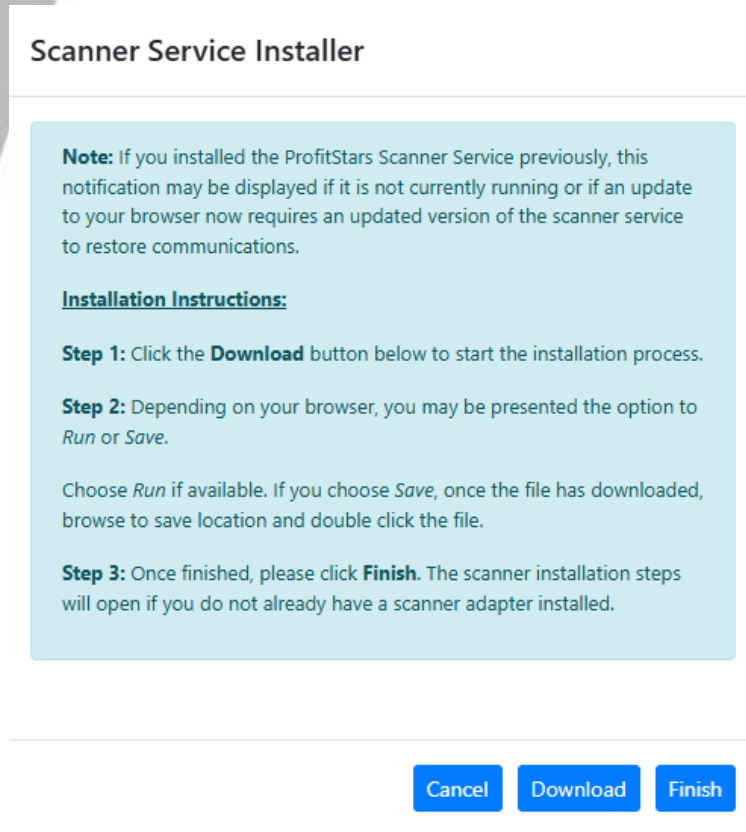
- The *Remote Deposit Now* page appears. Select **Scan** from the top menu bar.



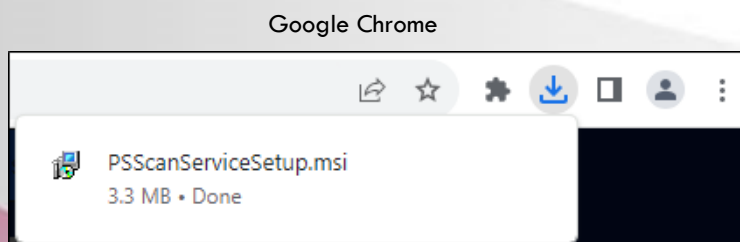
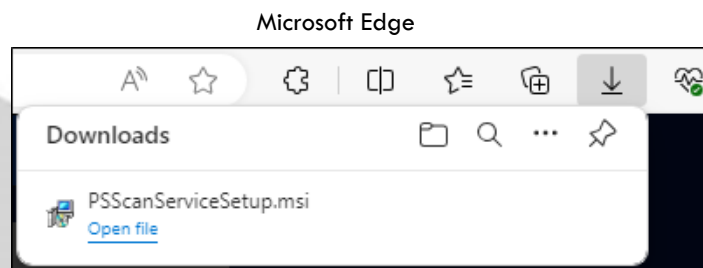
Installing ProfitStars Scan Service

Treasury Management

5. The *Scanner Service Installer* window appears. Click **Download** to begin.



6. Depending on your browser, you will see one of the following downloads to click:



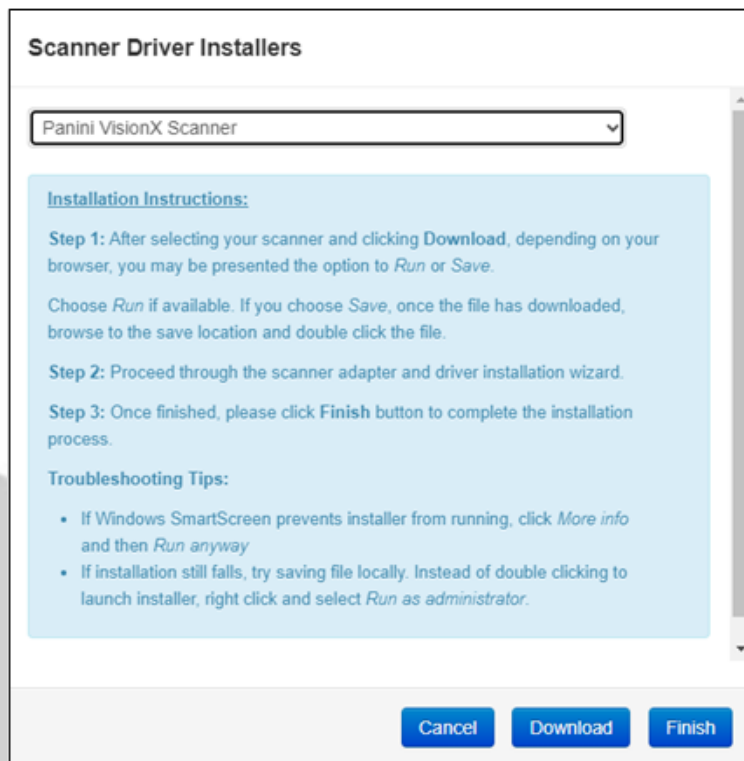
Installing ProfitStars Scan Service

Treasury Management

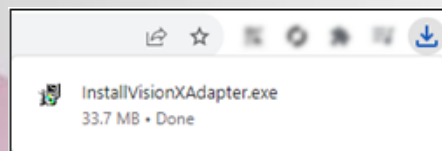
7. The ProfitStars Scan Service Setup Install Wizard appears. Disconnect the scanner's USB from your computer and exit all other applications if you have not already done so. Click **Next** to continue.
8. The Install Wizard displays the Install Prompt. Click Install to continue.
9. If the *Files in Use* prompt appears, select **Close the applications and attempt to restart them** and click **OK**.
10. Select **Finish** to complete the installation.

Installing Your Scanner

1. The Scanner Driver Installers window appears. Select the type of scanner that you are using from the drop down menu (the following screenshots are an example for Panini Vision X scanners. If choosing a different scanner model, images may differ) and select **Download**.



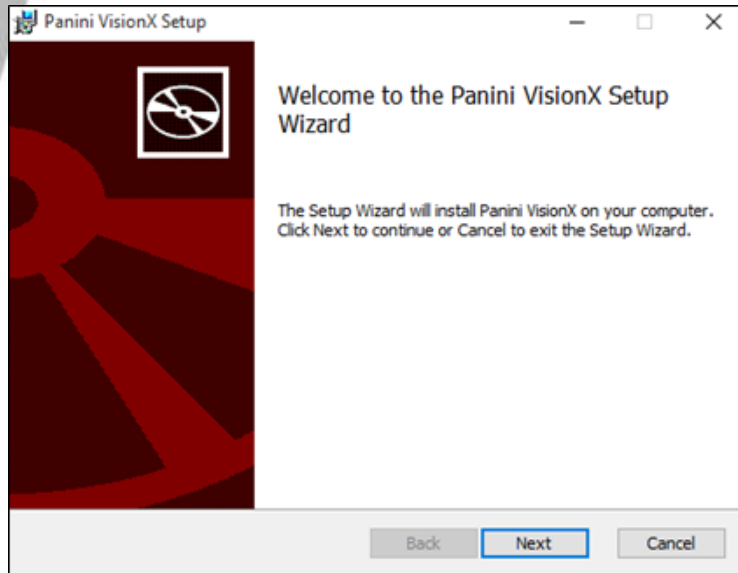
2. A file download will appear in your browser. Click the download file to open it.



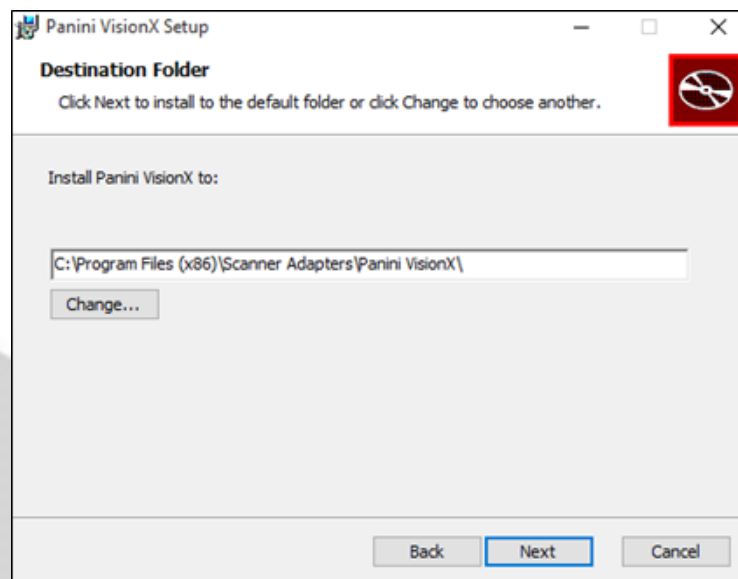
Installing Your Scanner

Treasury Management

3. Depending on the type of scanner for which you are installing a driver, you may receive the following adapter setup message. Click **Next** to continue. If you do not receive this prompt, skip to step 7.



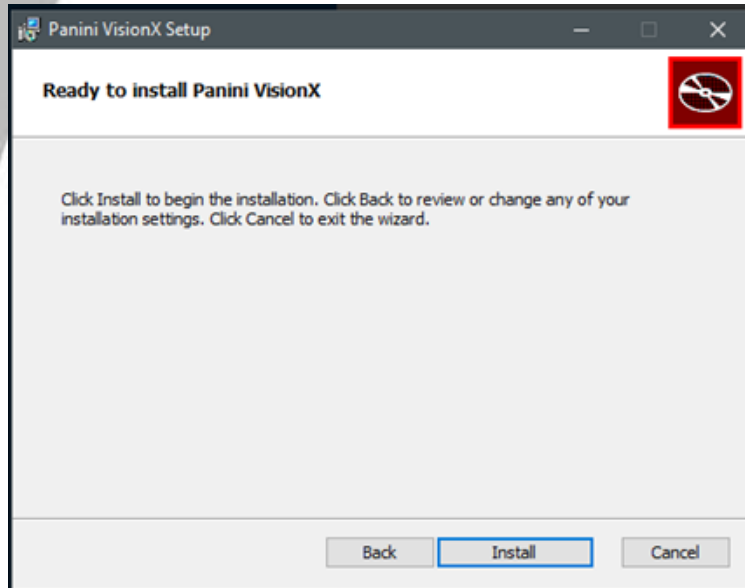
4. The following screen displays information about the destination folder for the adapter. Select **Next** to continue.



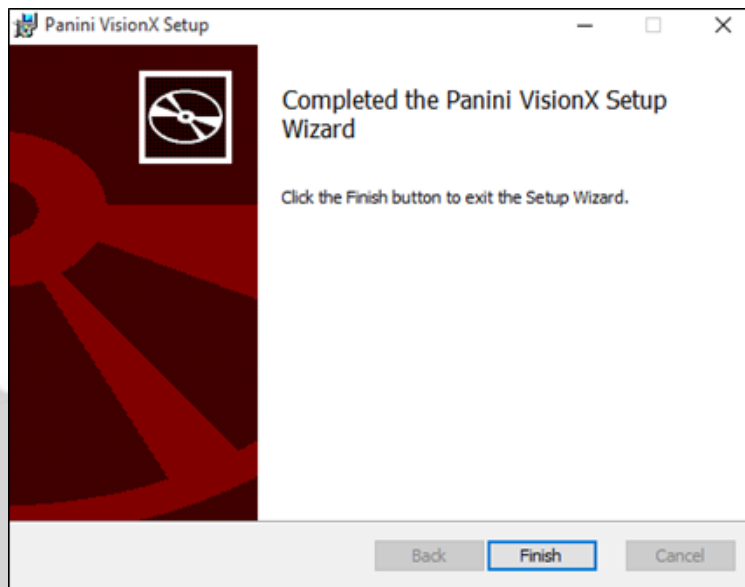
Installing Your Scanner

Treasury Management

5. Click **Install** to continue.



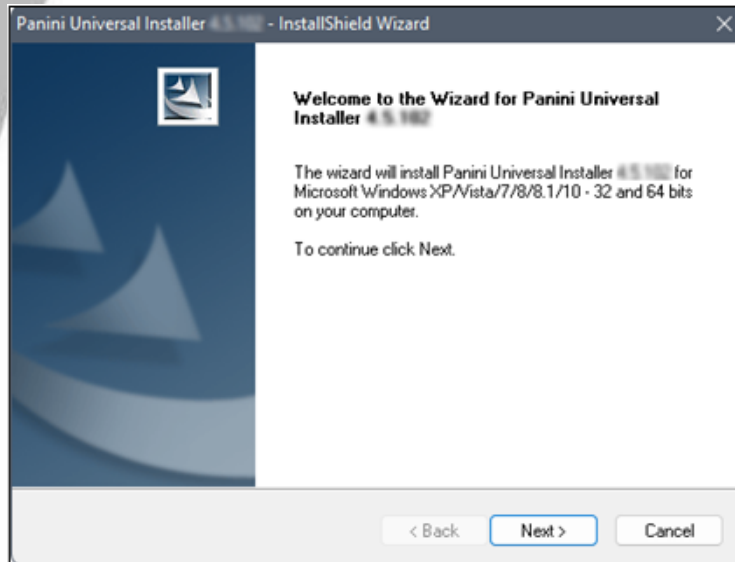
6. A confirmation for completing the adapter set up appears. Click **Finish**.



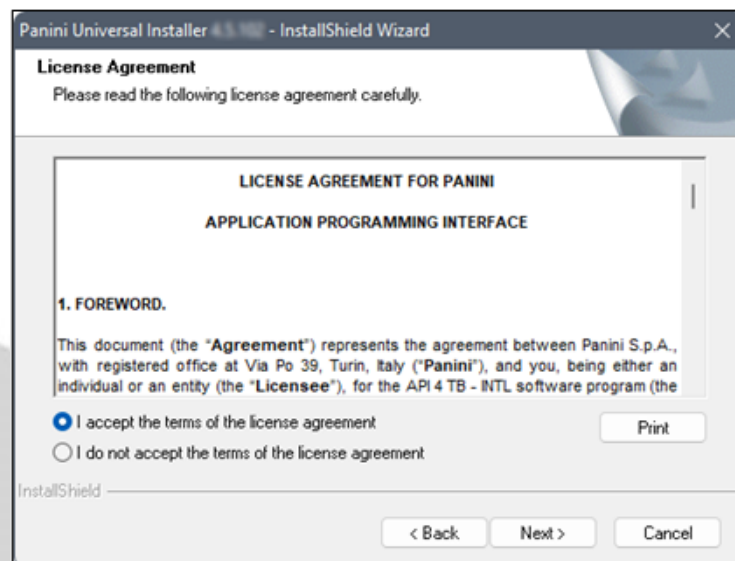
Installing Your Check Scanner

Treasury Management

7. An installation prompt appears. Select **Next** to continue.



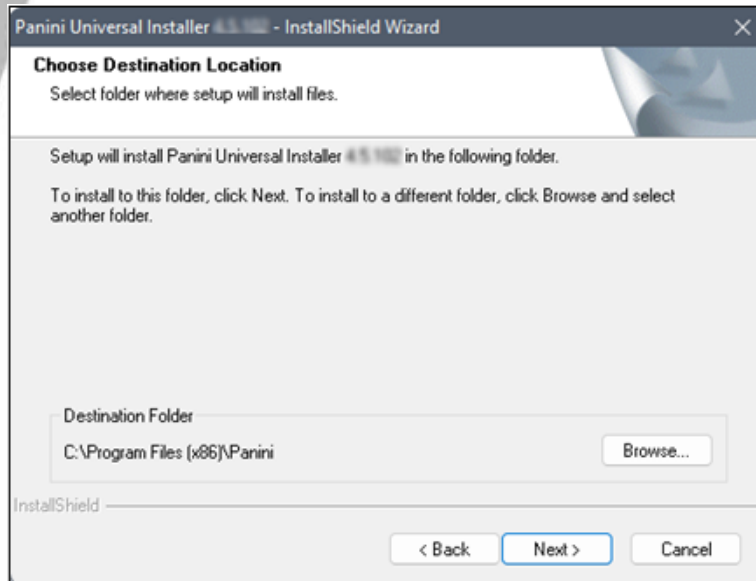
8. An End User License Agreement appears. Select **I accept the terms of the license agreement** radio button, and then select **Next**.



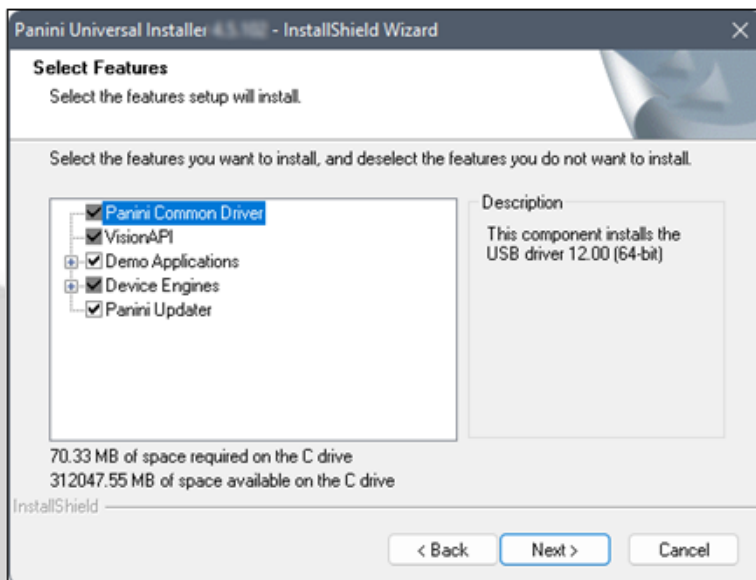
Installing Your Scanner

Treasury Management

9. A location prompt appears asking you to confirm a location where the setup files install on your computer. Select **Browse** to designate a location other than the one provided if desired. Click **Next** to continue.



10. A prompt appears for the features that are installed. Select **Next** to continue.



Installing Your Scanner

Treasury Management

11. A confirmation for completing the software install appears. Click **Finish**.

